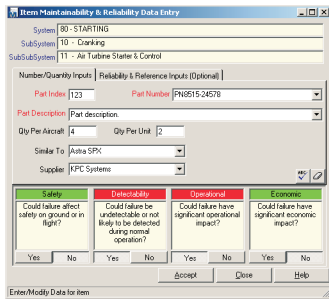




MPC3

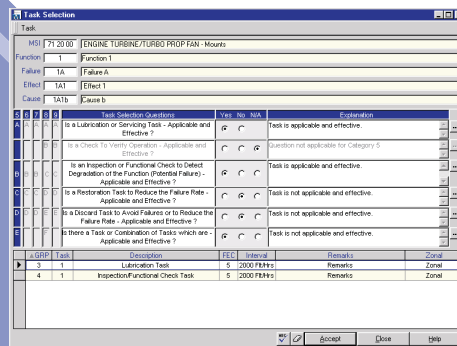
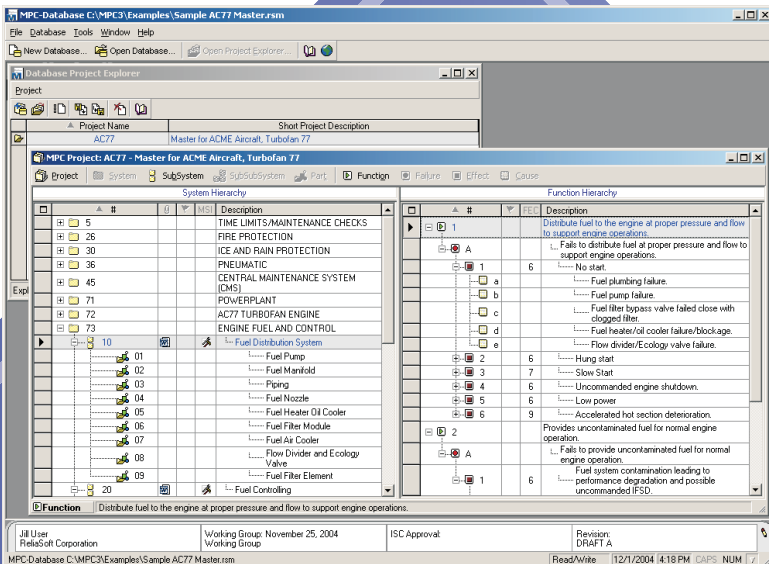
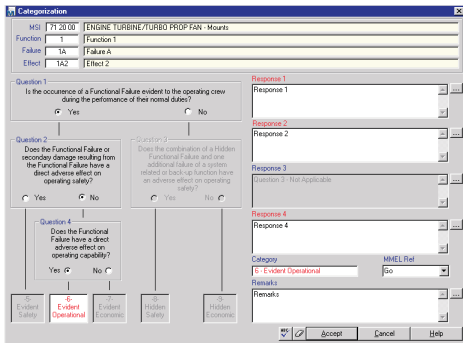
An MSG-3 Compliant Maintenance Program Creator



ReliaSoft's MPC 3 is an MSG-3 compliant maintenance program creator for the aircraft / aerospace industry. The software has been designed to assist engineering teams to accurately and efficiently complete aircraft systems and powerplant analysis in accordance with the Air Transport Association's "ATA Operator / Manufacturer Scheduled Maintenance Development (MSG-3)" document, which has been accepted by the Federal Aviation Administration (FAA) as a guideline for the preparation of Maintenance Review Board (MRB) reports.

Developed in conjunction with Honeywell Aircraft Engines & Systems and based on Honeywell's MSG-3 Creator 2.0

tool, the MPC 3 software provides powerful interface enhancements and new data management and reporting capabilities that will save time and may improve the quality of your analyses.



<http://MPC.ReliaSoft.com>

FACILITATES MSG-3 SYSTEMS AND POWERPLANT ANALYSIS

From the identification of maintenance significant items (MSIs) through the analysis of functions, failures, effects, causes and tasks, to the generation of the final report document, ReliaSoft's MPC 3 guides you through the entire MSG-3 process for aircraft systems and powerplant analysis. The software also provides the tools your organization needs to manage the analysis data and to generate report documents.

Identify Maintenance Significant Items (MSIs)

The MPC 3 interface makes it easy to define and manage the systems, subsystems, subsystems and parts to be included in your analysis. The software contains the complete list of ATA system and subsystem numbers and descriptions for you to select from and also provides quick and easy utilities for defining subsystems and parts. The intuitive hierarchical structure makes it easy to manage and display this information. MPC 3 contains built-in logic to help you determine which components represent maintenance significant items (MSIs) in the analysis.

Defining Functions, Failures, Effects and Causes

For each MSI, you can easily define and modify the related functions, failures, effects and causes. This information is also displayed in an intuitive hierarchical tree structure that is easy to navigate.

Categorizing Effects and Selecting Maintenance Tasks

MPC 3 includes built-in logic for determining the failure effect category and selecting the appropriate maintenance tasks based on the MSG-3 guidelines.

MPC 3 allows you to categorize effects as Evident Safety, Evident Operational, Evident Economic, Hidden Safety and Hidden Non-Safety. The software also guides you through the steps to select and assign Lubrication/ Servicing, Inspection/Functional Check, Operation/Visual Check, Restoration, Discard or other maintenance tasks.

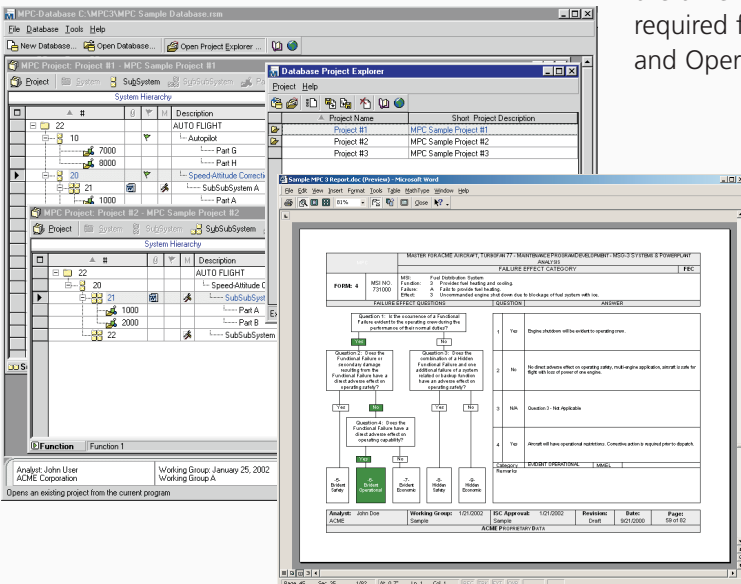
Automatic Report Generation in Microsoft Word®

After guiding you through the process to complete the MSG-3 analysis, MPC 3 will automatically generate the maintenance program report in Microsoft Word®. This report can be generated automatically in a fraction of the time required to prepare a report manually and includes all required formatting, analysis results and attached "Description and Operation" (D&O) documents.

Platform
Windows NT, 2000, XP or Vista.
Microsoft Word 97 or higher for report creation.

Integration
Xfmea and RCM++.

Support
ReliaSoft's unparalleled after-sale support includes free telephone, fax or e-mail support. Free minor version updates are also included.



Teamwork and Project Management

MPC 3 has been designed to allow multiple users to work cooperatively on their MSG-3 analyses. This includes document control capabilities via check-in and check-out.

The software also facilitates the ability to re-use sections from other analyses via import/export and copy/paste. For most text fields within the analysis, you also have the option to select a description from a list of existing entries for that field.

ReliaSoft.



TOOLS TO EMPOWER
THE RELIABILITY PROFESSIONAL