



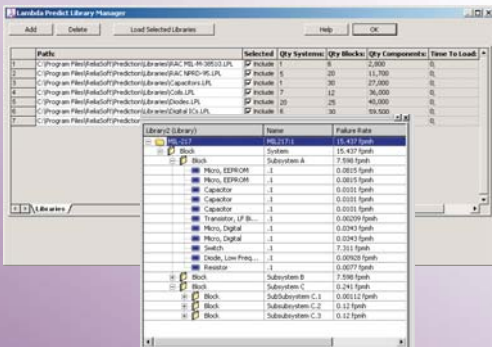
PREDICT

A comprehensive platform for Standards Based Reliability Prediction analysis...

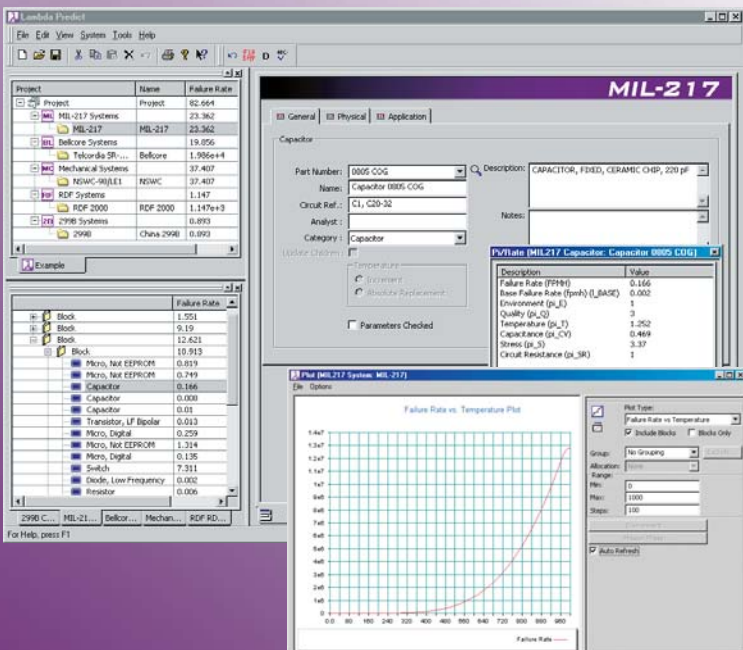
All major reliability prediction standards, extensive set of component libraries, results, plots, reports and more!

When actual product reliability data is not available, Standards Based Reliability Prediction may be used to evaluate design feasibility, compare design alternatives, identify potential failure areas, trade-off system design factors and track reliability improvement.

ReliaSoft's *Lambda Predict* software supports all of the major reliability prediction standards (MIL-217, Bellcore, NSWC, RDF 2000 and China 299B) and comes with an extensive collection of pre-defined component libraries.



Lambda Predict provides a complete array of calculated results along with graphical charts and customizable print-ready reports. The software also offers a full set of supporting tools, including a reliability allocation utility, the ability to transfer your data via flexible import/export utilities, and much more!



ReliaSoft®



A COMPREHENSIVE PLATFORM FOR STANDARDS BASED RELIABILITY PREDICTION...

ReliaSoft's Lambda Predict software provides a comprehensive platform for your standards based reliability prediction analyses. The software facilitates every step of the analysis process, with user-friendly utilities designed to make it easy for you to:

- Build the system configuration ("from scratch" or with imports from outside sources, including an extensive collection of valuable parts libraries).
- Define component characteristics and operating conditions, with the choice of the Dialog View or Grid View to facilitate data entry.
- Calculate results (Pi Factors, Failure Rates, etc.) at any level within the configuration.
- Use graphical plots/charts to visualize analysis results.
- Generate print-ready reports to support decision-making and disseminate knowledge.
- Export data for use in other analyses.

Supports All Major Reliability Prediction Standards:

- * MIL-HDBK-217
- * Bellcore (Telcordia)
- * RDF 2000
- * China 299B
- * NSWC-98/LE1

Support for All Major Reliability Prediction Standards

You can perform your analyses with any of the major reliability prediction standards. This includes MIL-HDBK-217, Bellcore (Telcordia), RDF 2000 and China 299B for the analysis of electronics and related components plus NSWC-98/LE1 for mechanical components. You can purchase only the standards (modules) that you need and mix and match components from different analyses as needed.

Use Pre-Defined Component Libraries and/or Build Your Own

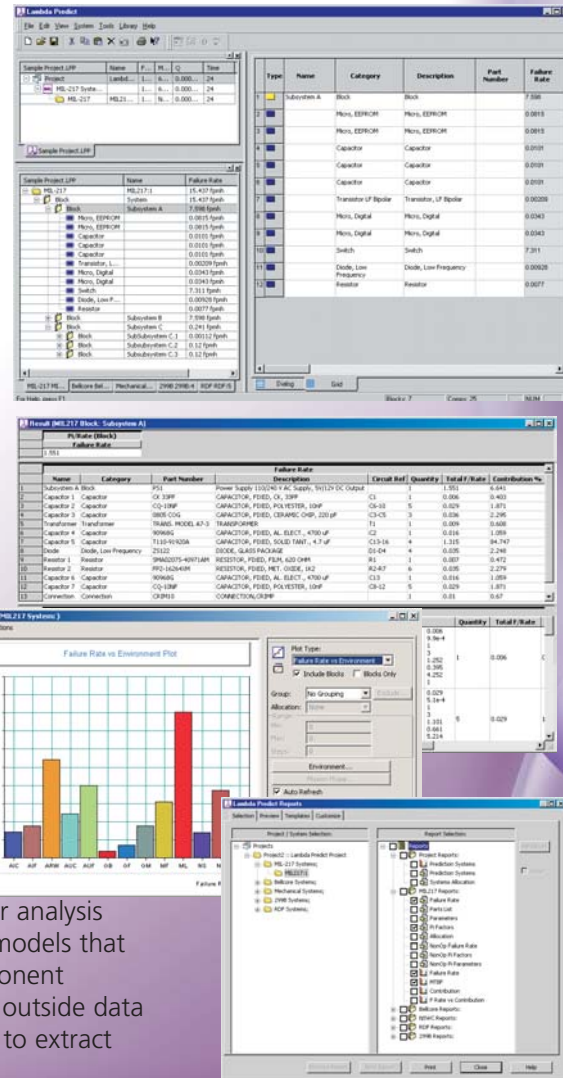
Lambda Predict comes with an extensive array of pre-defined component libraries with part data compiled from spec sheets and a variety of other sources -- and you can also purchase additional libraries to meet specific needs. Available libraries provide data for over 240,000 components, including capacitors, diodes, resistors, coils, integrated circuits and the electromechanical components from RAC NPRD. It's also easy to build your own custom libraries to share knowledge and save time for future analyses.

Complete Array of Calculated Results, Plots and Reports

Calculated results, including Failure Rates, MTBFs, Pi Factors and other metrics, are readily available for individual components, higher level assemblies, systems and even projects. In addition, the Plot Viewer provides a complete array of plots/charts to demonstrate your analysis graphically and the flexible report generation utility provides a variety of pre-defined print-ready reports along with the ability to manage your own custom report templates.

More Supporting Tools

Lambda Predict provides a number of supporting tools to enhance and expand your analysis capabilities. For example, the Failure Rate Allocation utility provides five allocation models that can be applied to your analysis. The Library Manager makes it easy to search component libraries based on Part Number. The Import Wizard allows you to import data from outside data sources, such as Bill of Materials (BOM) systems, and the Export Wizard allows you to extract your data into a Microsoft Jet database, Excel file or other delimited file format.



Requirements: Windows 98, Me, NT, 2000 or XP.

Support: ReliaSoft's unparalleled after-sale support includes free telephone, fax and e-mail support. Free minor version updates are also included.



For more information:

Phone: +1.520.886.0410

Fax: +1.520.886.0399

Web: <http://Predict.Reliasoft.com>

Toll Free: 1.888.886.0410 (U.S. and Canada)

E-mail: Sales@Reliasoft.com

