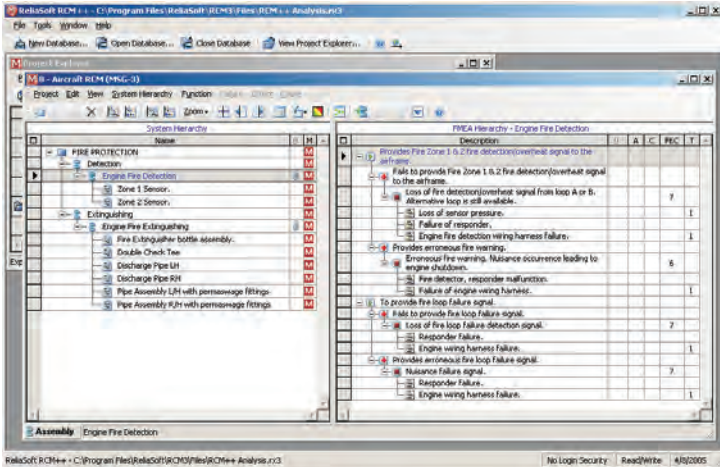


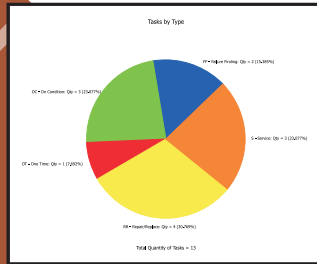
# RCM++

Putting the Reliability Back Into Reliability Centered Maintenance<sup>SM</sup>

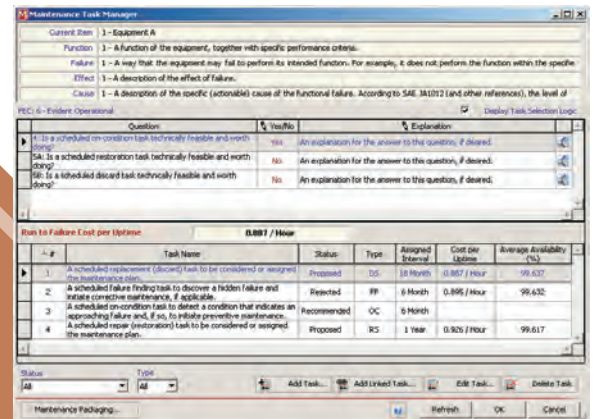
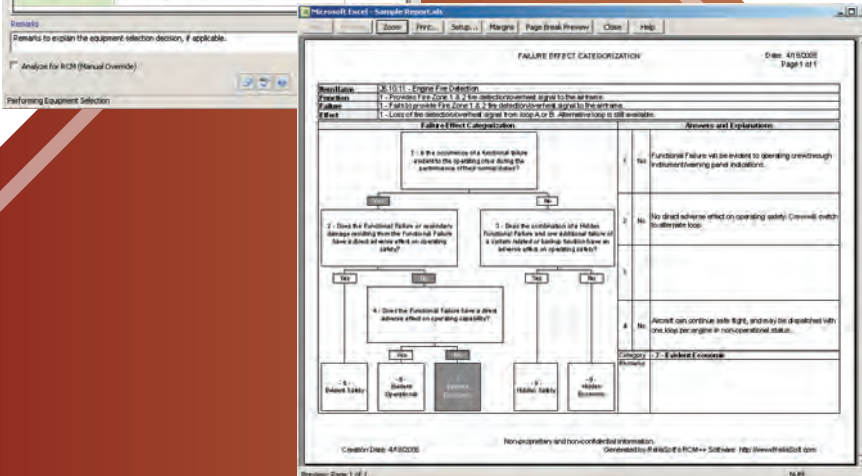


**RCM++ facilitates analysis, data management and reporting for Reliability Centered Maintenance (RCM) analysis, with support for all of the major industry standards (such as ATA MSG-3, SAE JA1012 and NAVAIR 00-25-403) and extensive customization options.**

**The software includes configurable Equipment Selection, Failure Effect Categorization and Maintenance Task Selection capabilities.**



**In addition, RCM++ also provides simulation-based calculations that can be used to compare the costs of various task maintenance strategies and a calculator to estimate the optimum replacement interval.**



<http://RCM.Reliasoft.com>

# RCM ANALYSIS, DATA MANAGEMENT AND REPORTING

**RCM++** facilitates analysis, data management and reporting for Reliability Centered Maintenance (RCM) analysis, integrated with full-featured FMEA capabilities. Features include:

## Support for Major Industry Standards

The software supports all of the major industry standards (such as ATA MSG-3, SAE JA1012 or NAVAIR 00-25-403 for RCM and SAE J1739, AIAG FMEA-3 and MIL-STD-1629A for FMEA/FMECA) with extensive capabilities to customize the interface and the reports to meet specific needs.

## Equipment Selection

In order to focus resources where they can provide the greatest benefit, **RCM++** supports two configurable methods for selecting the equipment that will be analyzed with RCM techniques: Selection Questions (yes/no) and Criticality Factors (rating scales).

## Failure Effect Categorization and Maintenance Task Selection Logic

**RCM++** supports the Failure Effect Categorization (FEC) and Maintenance Task Selection logic diagrams in the major industry RCM standards and provides the ability to customize the questions and categories to meet specific application needs.

## Optimum Maintenance Interval and Cost Comparisons

**RCM++** goes beyond calculations based on MTBFs and the often inappropriate assumption of an exponential failure distribution. Now, you can use the Weibull, exponential, normal, lognormal or mixed Weibull distributions to describe the equipment's failure behavior and then use the same powerful calculation and simulation engines that are available in ReliaSoft's **BlockSim** software to estimate the optimum maintenance interval and to compare the operational costs of various maintenance strategies.

## Maintenance Task Packaging

**RCM++** makes it easy to group individual tasks into packages based on interval, labor crew, etc. Both manual and automated packaging options are available.

## Reports, Charts and Queries:

The software provides a complete set of print-ready reports for your analysis, which can be generated directly in Microsoft Word® or Excel®. The software also provides a variety of pareto (bar), pie and matrix charts to demonstrate the analysis information graphically, as well as a flexible query utility.

## Full-Featured FMEA or FMECA

Full integration with ReliaSoft's **Xfmea** software enables **RCM++** to provide a complete set of FMEA/FMECA capabilities that can be used independently or integrated with the RCM analysis. This includes Risk Priority Numbers (RPNs) or Criticality Analysis, recommended action tracking, and much more.

## Data Management

**RCM++** allows multiple users to work cooperatively on the analysis and provides numerous ways to leverage the lessons learned from previous analyses, including copy/paste, import/export, phrase libraries, etc.

## Platform

Windows NT, 2000, XP or Vista.  
Microsoft Office 2000 or higher  
for report creation.

## Languages

English, German, French,  
Portuguese, Spanish and  
Simplified Chinese.

## Integration

Weibull++, ALTA, BlockSim,  
Xfmea, MPC 3 and XFRACAS.

## Support

ReliaSoft's unparalleled  
after-sale support includes free  
telephone, fax or e-mail support.  
Free minor version updates are  
also included.

#	Task Name	Status	Type	Assigned Interval	Labor Crew	Total Duration per Incident	Total Cost per Incident	Cost per Hour	Average Availability (%)
1	Inspect fuel pump and fuel control	Current	OC	4 Month	SB Level 1	0.25 Hour	\$2.25	\$9.00 / Hour	99.98%
2	Inspect nuts and bolts on chassis and body	Current	OC	4 Month	SB Level 1	0.25 Hour	\$2.25	\$9.00 / Hour	99.98%
3	Inspect tires	Current	S	4 Month	SB Level 1	1 Hour	\$90.00	\$90.00 / Hour	99.96%
4	Change oil and check oil filter	Current	S	4 Month	SB Level 1	0.25 Hour	\$2.25	\$9.00 / Hour	99.98%
5	Inspect engine air filter	Current	OC	4 Month	SB Level 1	0.25 Hour	\$2.25	\$9.00 / Hour	99.98%
6	8 Month Maintenance								
7	12 Month Maintenance								
8	24 Month Maintenance								
9	48 Month Maintenance								
10	72 Month Maintenance								

Item	Description	Unit	Cost
1	Material (Open Worksheet Number)		
2	Labor (Crew Name)	Hour	100.00
3	Duration Cost	Hour	200.00
4	Material Cost	Hour	25.00
5	Total Labor Cost	Hour	125.00
6	Material Cost	Hour	75.00
7	Total Cost per Incident	Hour	400.00

**ReliaSoft.**



TOOLS TO EMPOWER  
THE RELIABILITY PROFESSIONAL