

RG A[®]

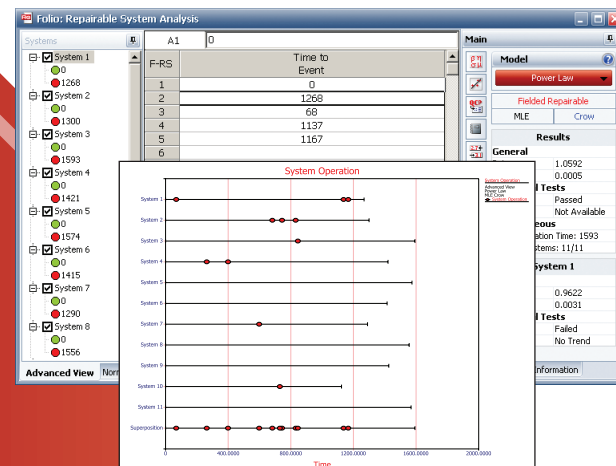
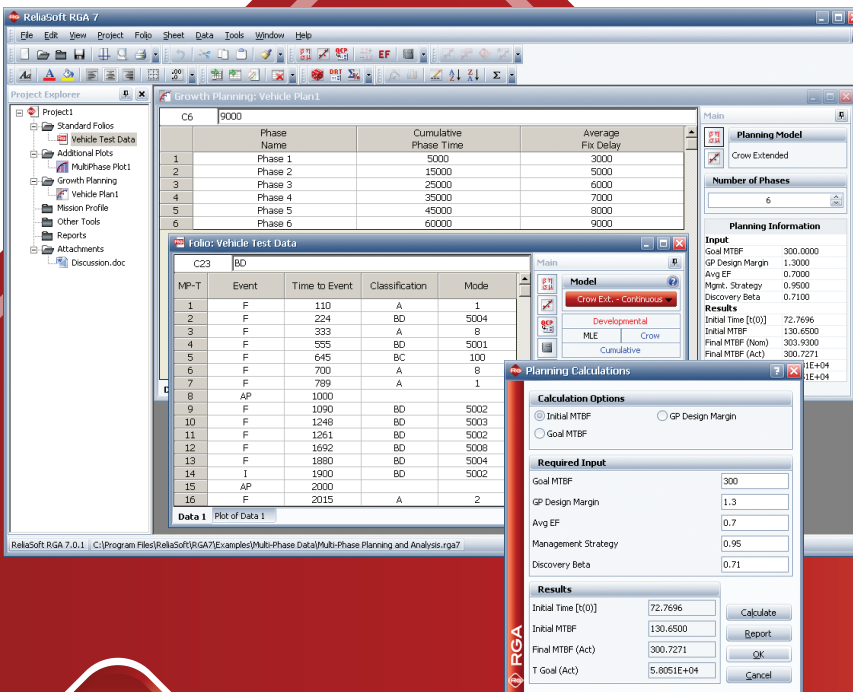
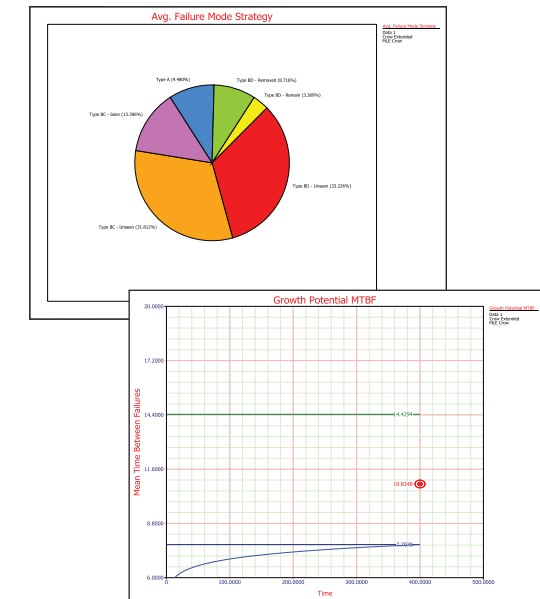
Reliability growth and repairable system analysis

ReliaSoft's RGA software was developed in cooperation with Dr. Larry Crow, the leading authority in the field of reliability growth analysis, as well as key development partners in government and industry.

RGA provides all the tools you need to plan your reliability growth strategy and analyze data from developmental tests.

The software also applies reliability growth models for fielded repairable system analysis, which

provides optimum overhaul times and other results without the detailed data sets that normally would be required.



<http://RGA.ReliaSoft.com>

MOST COMPREHENSIVE AND ADVANCED RGA SOFTWARE AVAILABLE

ReliaSoft's RGA is an application-oriented software package with all of the major reliability growth models, plus advanced analysis methods that are not available anywhere else.

Traditional Reliability Growth Analysis and Results

RGA supports all of the traditional reliability growth analysis models:

- Crow-AMSAA (NHPP)
- Duane
- Standard and Modified Gompertz
- Lloyd-Lipow
- Logistic

The software provides options for time-to-failure (continuous), discrete (success/failure) and reliability data from a variety of types of developmental reliability growth tests. The available model(s) depend on the type of data.

Reliability Growth Projections, Planning and Management

Available only in RGA, the software supports several innovative approaches that expand upon traditional reliability growth methods in ways that better represent real-world testing practices and practical applications.

- The Crow Extended model allows you to classify failure modes based on whether and when they will be fixed. This analysis allows you to make reliability growth projections and evaluate the reliability growth management strategy.
- The Growth Planning Folio helps you to create a multi-phase reliability growth testing plan. In addition, you can use the Crow Extended – Continuous Evaluation model to analyze data from multiple test phases and create a Multi-Phase Plot to compare your test results against the plan. This analysis will help to determine if it is necessary to make adjustments in subsequent test phases in order to meet your reliability goals.
- The Mission Profile Folio helps you to create a balanced operational test plan and track the actual testing against the plan to make sure the data will be suitable for reliability growth analysis.

Make the Most of a Limited Data Set for Fielded Repairable System Analysis

RGA also provides opportunities for fielded repairable system analysis. This includes a new Design of Reliability Tests (DRT) utility for repairable systems (based on the non-homogeneous Poisson process) and data sheets that have been specially designed for the analysis of fielded system data. Depending on the characteristics of your data set, you may be able to:

- Analyze the failure times for fielded repairable systems in order to understand the reliability over time and calculate metrics of interest (such as optimum overhaul time or expected number of failures) without the detailed data sets that would normally be required.
- Evaluate the reliability improvement that you can expect from rolling out fixes for a fleet of units operating in the field.
- Use grouped (interval) data analysis to evaluate fleet warranty data in order to estimate future returns.

Reasons to Upgrade to Version 7

RGA Version 7 offers a completely updated user interface and many useful new features. This includes:

- Reliability growth planning and analysis across multiple test phases
- Operational mission profiles
- Design of Reliability Tests for repairable systems
- Monte Carlo data generation and SimuMatic®

Platform

Windows XP, Vista or 7.

Integration

Weibull++, XFRACAS
and Orion eAPI.

Languages

English, German, French and
Portuguese.

Support

ReliaSoft's unparalleled
after-sale support includes free
telephone, fax or e-mail support.
Minor version updates are also
included.

ReliaSoft®