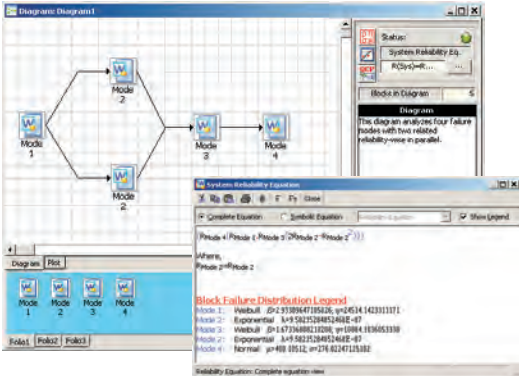
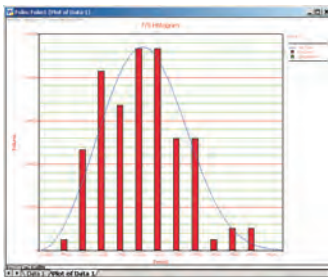


WEIBULL++

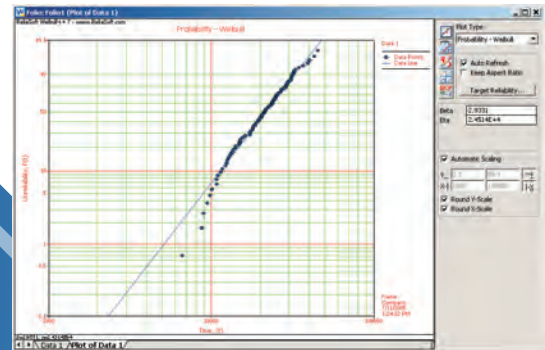
The standard for reliability life data analysisSM



Weibull++ is the industry standard in reliability and life data analysis (Weibull analysis) for thousands of companies worldwide. The software performs life data analysis utilizing multiple lifetime distributions (including all forms of the Weibull distribution), with a clear and concise interface geared toward reliability engineering.



For Version 7, Weibull++ was redesigned from the ground up. It incorporates many new and enhanced features, including a greatly enhanced user interface, an expanded warranty analysis utility, integrated reliability block diagrams and recurrence data analysis.



<http://Weibull.ReliaSoft.com>

LIFE DATA ANALYSIS AND AN ARRAY OF RELATED ANALYSES

Weibull++ provides a complete array of data analysis, plotting and reporting tools for standard life data analysis (Weibull analysis) with integrated support for a variety of related analyses. Built by reliability engineers for reliability engineers, this package continues to raise the bar for statistical analysis software for reliability applications.

All the options you need for standard life data analysis

- **All Types of Data:** **Weibull++** supports Complete, Right Censored (Suspended), Left Censored, Interval Censored and Free-Form data, entered individually or in groups. A specialized interface to analyze event log data is also available.
- **All Major Lifetime Distributions:** The software supports data analysis with the 1, 2 and 3 parameter Weibull, Mixed Weibull, 1 and 2 parameter Exponential, Lognormal, Normal, Generalized Gamma, Gamma, Logistic, Loglogistic, Gumbel and Weibull-Bayesian lifetime distributions. The Distribution Wizard automatically performs goodness-of-fit tests to help you select the most appropriate distribution for each data set.

Results, plots and reports at the click of a button

- **Parameter Estimation and Calculated Results:** **Weibull++** supports both Rank Regression and Maximum Likelihood Estimation (MLE) for parameter estimation. Integrated utilities quickly return calculated results (such as reliability given time and BX life) based on the data analysis and your inputs. Confidence bounds are available for all parameters and calculated results.
- **Plots and Automated Reports:** The software automatically generates a complete array of reliability plots, with customizable settings. Plots are metafile graphics that can be annotated and used in your reports and presentations. Automated report generation is also available.

A complete array of related analyses

- **Warranty Analysis:** Perform life data analysis and make warranty projections based on sales and returns data, entered in a Nevada, Times-to-Failure or Dates of Failure format.
- **Reliability Block Diagram:** Use Reliability Block Diagrams (RBDs) that are integrated with calculated data folios to analyze competing failure modes and perform other system analyses.
- **Recurrence Data Analysis:** Use parametric or non-parametric methods to analyze events that are dependent and not identically distributed (such as repairable system data) and/or to model the number of occurrences of an event over time.
- **Degradation Analysis:** Use the Linear, Exponential, Power, Logarithmic, Gompertz or Lloyd-Lipow models to extrapolate the failure times of a product based on its performance (degradation) over a period of time.
- **SimuMatic:** Automatically perform large quantities of analyses on simulated data sets in order to investigate various reliability questions, including confidence bounds, testing scenarios, etc.
- **Design of Reliability Tests:** Determine the appropriate sample size, test duration or other variables for reliability demonstration tests.

Platform

Windows NT, 2000, XP or Vista.

Languages

English, German, French, Portuguese, Spanish, Simplified Chinese and Japanese.

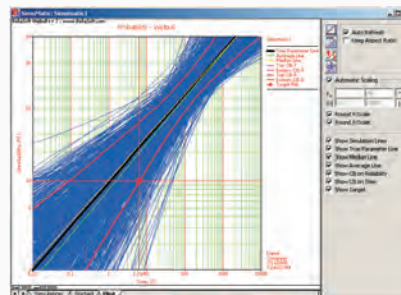
Integration

ALTA, DOE++, BlockSim, RENO, RGA, Xfmea, RCM++ and XFRACAS.

Support

ReliaSoft's unparalleled after-sale support includes free telephone, fax or e-mail support. Free minor version updates are also included.

All	Jan 04	Feb 04	Mar 04	Apr 04	May 04	Jun 04	Jul 04	Aug 04	Jan 05	Feb 05	Mar 05	Apr 05	May 05	Jun 05	Jul 05	Aug 05
Jan 04	20	21	22	25	25	27	29	29	30	32						
Feb 04	42	16	19	53	56	59	62	65	67	69						
Mar 04	14	14	17	17	19	20	21	22	22	24						
Apr 04	33	36	41	44	47	51	55	57	60	62						
May 04	26	30	33	37	41	43	47	50	52	55						
Jun 04	9	11	12	13	15	17	17	19	20	21						
Jul 04	9	11	12	15	16	17	20	21	22	24						
Aug 04	19	25	31	35	41	46	51	55	59	64						
Sep 04	14	19	25	30	35	40	46	50	55	59						
Oct 04	6	10	14	18	21	25	29	33	36	40						
Nov 04	0	2	3	5	6	7	8	10	10	12						
Dec 04	0	2	3	5	6	7	8	10	10	12						
Jan 05	0	1	1	1	1	1	1	1	1	1						
Feb 05	0	1	1	1	1	1	1	1	1	1						
Mar 05	0	1	1	1	1	1	1	1	1	1						
Apr 05	0	1	1	1	1	1	1	1	1	1						
May 05	0	1	1	1	1	1	1	1	1	1						
Jun 05	0	1	1	1	1	1	1	1	1	1						
Jul 05	0	1	1	1	1	1	1	1	1	1						
Aug 05	0	1	1	1	1	1	1	1	1	1						



ReliaSoft.



TOOLS TO EMPOWER
THE RELIABILITY PROFESSIONAL